



Garrison Road, London, E3

BUTLER & STAG



Guide Price £425,000 - £450,000
Spanning 805 Sq/Ft of internal living space is this extraordinary, upscale two-bedroom, two-bathroom top floor apartment.



Leasehold

- Top Floor Apartment
- Two Bathrooms
- Two Bedrooms
- Historic Roman Road Market Close By
- 805 Sq/Ft Internal Living Space
- Balcony
- Chain Free
- Bow Road Tube Station Close By

The living space is thoughtfully configured to maximize both functionality and aesthetic appeal. The two well-appointed bedrooms provide a private sanctuary for relaxation, each featuring ample natural light and well-designed layouts. The principal bedroom is accompanied by an en-suite bathroom, offering a touch of luxury and convenience.

The heart of this residence is the open-concept living area that seamlessly connects the living room, dining space, and kitchen. The kitchen is equipped with appliances and ample storage, catering to the needs of budding chefs.

One of the standout features of this home is the private balcony creating a fantastic outdoor extension to the main living area.

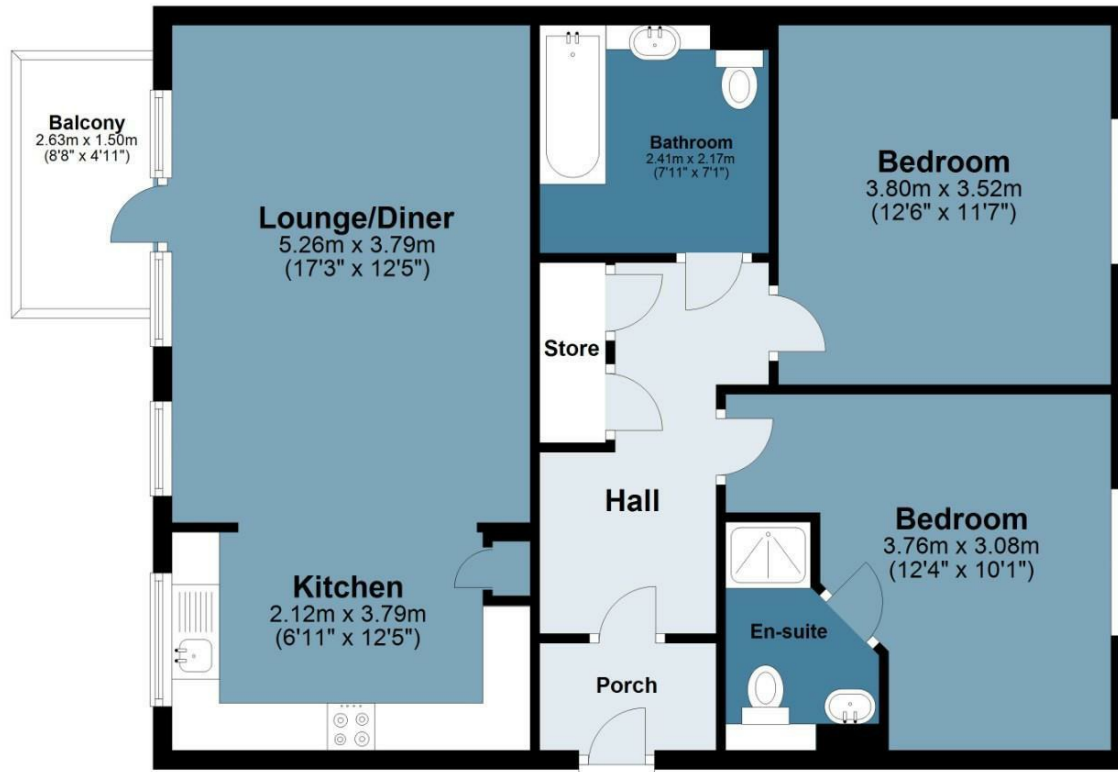
Beyond the confines of this stylish abode, the neighborhood itself offers a wealth of amenities. From trendy cafes to eclectic boutiques, Bow is known for its diverse and lively atmosphere. Residents can explore nearby parks, cultural venues, and convenient public transportation options, ensuring that the best of the city is at their fingertips.





Third Floor

Approx. 74.8 sq. metres (805.3 sq. feet)



Total area: approx. 74.8 sq. metres (805.3 sq. feet)

Apollo House

BUTLER & STAG

☎ 020 8102 1236

🏠 508 Roman Road, Bow, London, E3 5LU

✉ bow@butlerandstag.com

www.butlerandstag.uk

IMPORTANT NOTICE - These particulars have been prepared in good faith and they are not intended to constitute part of an offer or contract. We have not performed a structural survey on this property and the services, appliances and specific fittings have not been tested. All photographs, measurements, floor plans and distances referred to are given as a guide and should not be relied upon.